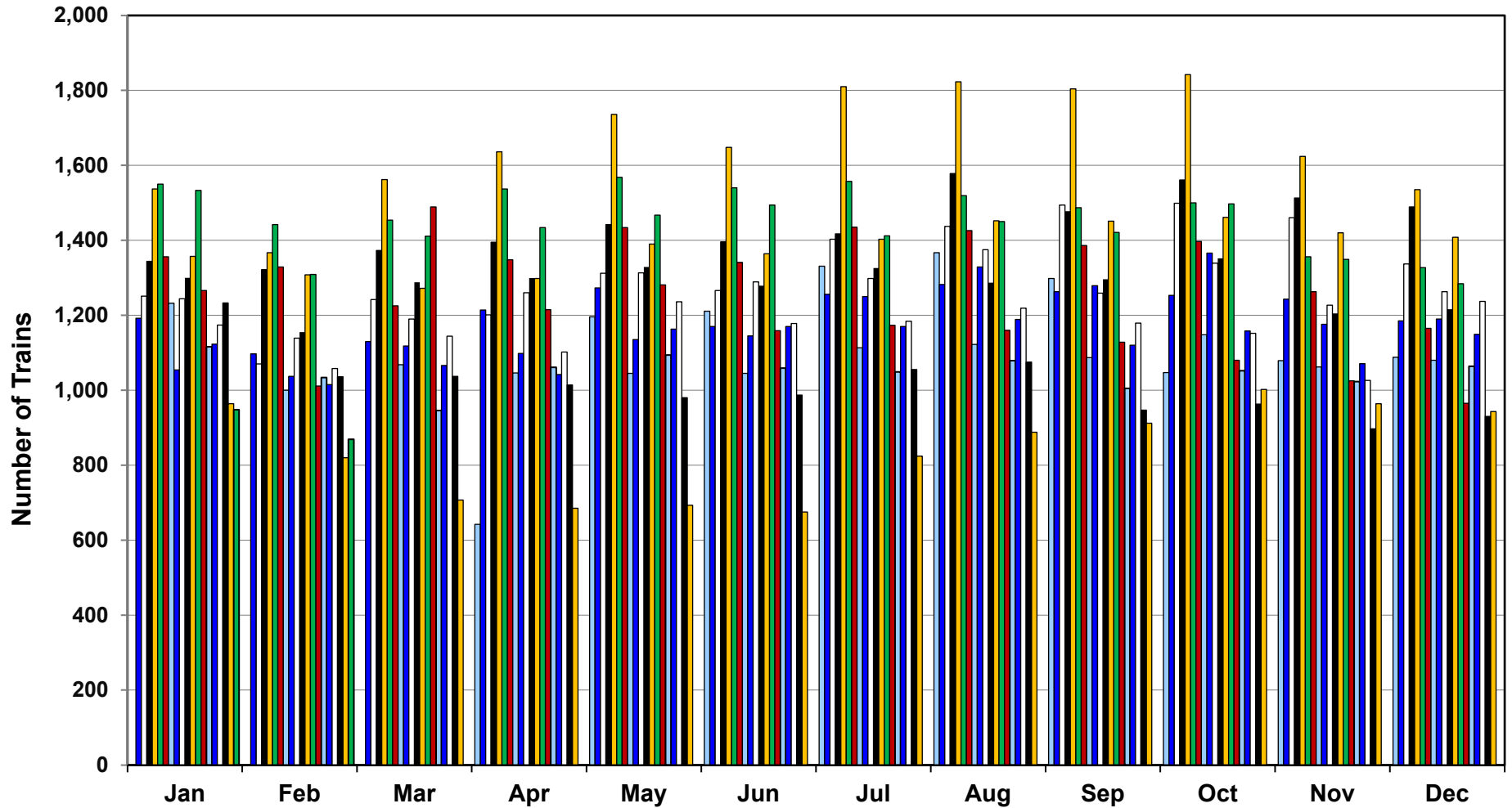


**Number of Trains Running  
on the Alameda Corridor**

	2002	2003	2004	2005	2006	2007	2008	2009	2010	2011	2012	2013	2014	2015	2016	2017	2018	2019	2020	2021	2021 Daily Avg. per Month *
Jan		1,192	1,251	1,344	1,537	1,550	1,356	1,232	1,054	1,244	1,300	1,357	1,533	1,266	1,116	1,123	1,174	1,233	964	948	30.6
Feb		1,097	1,070	1,322	1,367	1,442	1,329	1,000	1,037	1,139	1,155	1,308	1,309	1,011	1,034	1,015	1,058	1,036	820	869	31.0
Mar		1,130	1,242	1,373	1,562	1,454	1,225	1,068	1,118	1,190	1,288	1,272	1,411	1,489	946	1,066	1,144	1,037	707		
Apr	642	1,214	1,201	1,395	1,636	1,537	1,348	1,046	1,098	1,260	1,299	1,298	1,434	1,215	1,061	1,042	1,102	1,014	685		
May	1,196	1,273	1,312	1,442	1,736	1,568	1,434	1,045	1,135	1,313	1,329	1,390	1,467	1,281	1,094	1,163	1,236	980	693		
Jun	1,211	1,170	1,266	1,396	1,648	1,540	1,341	1,045	1,145	1,289	1,279	1,364	1,494	1,159	1,059	1,170	1,178	987	675		
Jul	1,331	1,256	1,403	1,417	1,810	1,557	1,435	1,113	1,250	1,298	1,326	1,403	1,412	1,173	1,049	1,170	1,184	1,055	824		
Aug	1,367	1,282	1,437	1,578	1,823	1,519	1,426	1,122	1,329	1,375	1,287	1,452	1,450	1,196	1,079	1,189	1,219	1,075	888		
Sep	1,298	1,263	1,494	1,476	1,804	1,487	1,386	1,087	1,279	1,259	1,296	1,451	1,421	1,128	1,005	1,120	1,179	947	912		
Oct	1,047	1,253	1,499	1,561	1,842	1,500	1,397	1,148	1,366	1,339	1,352	1,461	1,497	1,080	1,052	1,158	1,152	963	1,002		
Nov	1,079	1,243	1,460	1,513	1,624	1,356	1,263	1,062	1,176	1,227	1,205	1,420	1,349	1,025	1,023	1,071	1,026	897	964		
Dec	1,088	1,185	1,337	1,489	1,535	1,327	1,165	1,080	1,190	1,263	1,216	1,408	1,284	965	1,064	1,149	1,237	930	943		
Total	10,259	14,558	15,972	17,306	19,924	17,837	16,105	13,048	14,177	15,196	15,332	16,584	17,061	13,988	12,582	13,436	13,889	12,154	10,077	1,817	
Avg. # per day	39	40	44	47	55	49	44	36	39	42	42	45	47	38	34	37	38	33	28	31	
<b>Number of Trains to Date</b>																				<b>281,302</b>	

\* Corridor Capacity 150 Trains per Day

# Alameda Corridor Train Counts



Average Daily Trains\*:

<u>2002</u>	<u>2003</u>	<u>2004</u>	<u>2005</u>	<u>2006</u>	<u>2007</u>	<u>2008</u>	<u>2009</u>	<u>2010</u>	<u>2011</u>
39	40	44	47	55	49	44	36	39	42
<u>2012</u>	<u>2013</u>	<u>2014</u>	<u>2015</u>	<u>2016</u>	<u>2017</u>	<u>2018</u>	<u>2019</u>	<u>2020</u>	<u>2021</u>
42	45	47	38	34	37	38	33	28	31

- 2002 2003 2004 2005 2006 2007 2008
- 2009 2010 2011 2012 2013 2014 2015
- 2016 2017 2018 2019 2020 2021

\* Corridor Capacity 150 Trains per Day